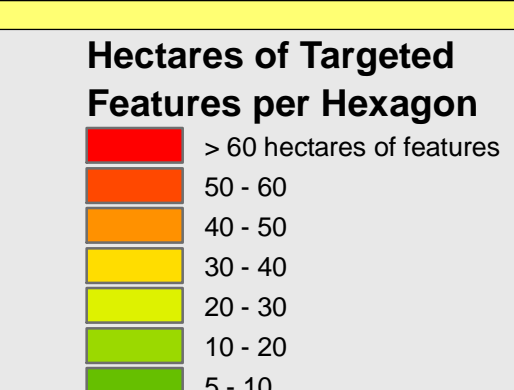


# Combined Sum of Targeted Features per Hexagon\*

Applied to Preferred Solution

\* One hexagon planning unit may contain many hectares of targeted features. For example, a given hectare of a planning unit may represent as the same time:  
 • 5 hectares of wetland contributing to biodiversity  
 • 5 hectares of wetland contributing to ecosystem habitat  
 • 5 hectares of wetland for hydrologic function  
 (Partly Watershed scale)  
 (Quaternary Watershed scale)  
 • 5 hectares of significant groundwater recharge area  
 The combined sum is 25 hectares of targeted features within the hexagon.



**Excluded from Solution**

- Other Developed Land
- Agriculture Land (predominantly)

**Boundaries**

- Focus Area
- Analysis Area
- Conservation Authority Jurisdiction

**Other Features**

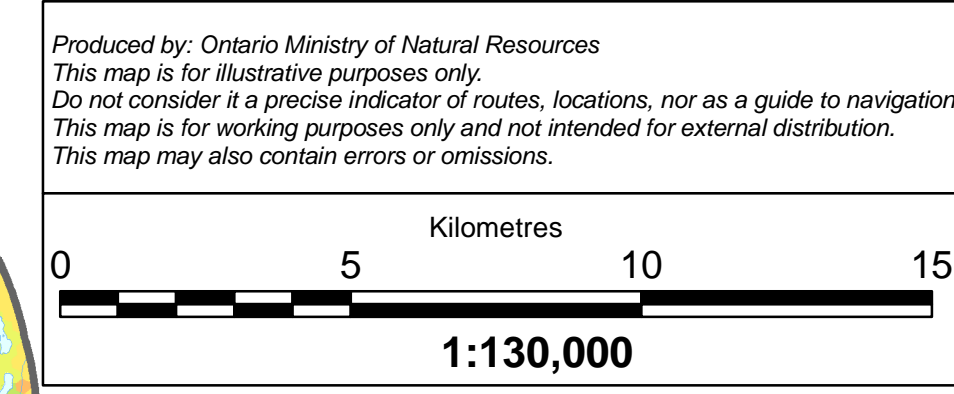
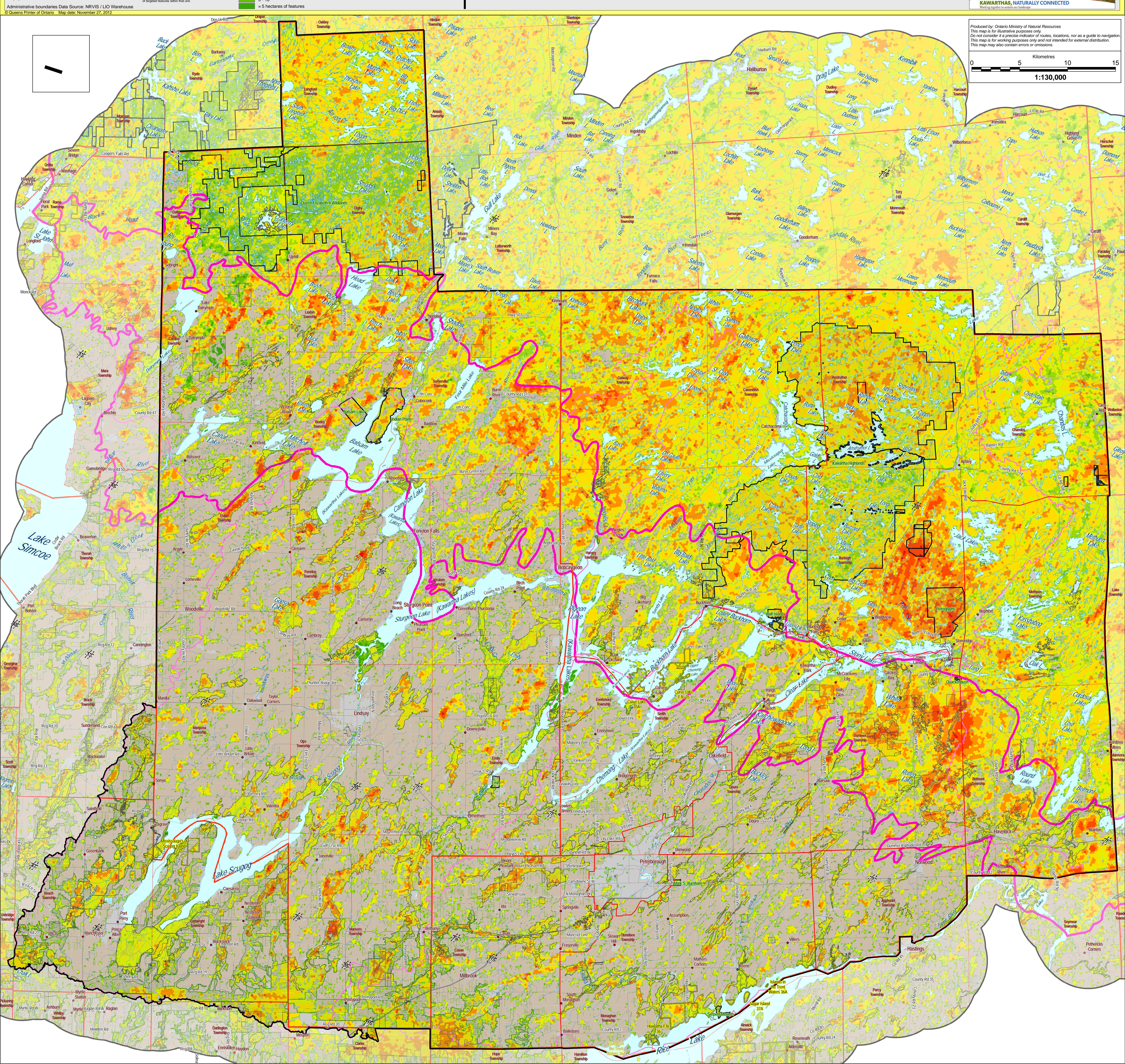
- First Nation Community
- Municipality Upper-Tier
- Municipality Lower-Tier
- Townships

**Regulated Areas**

- Regulated Prov. Park or Conservation Reserve
- Greenbelt / Oak Ridges Moraine Plan NHS (Natural Core and "Linkage" areas only)
- Private Organization or Conservation Authority (Unconfirmed NSO & CA Conservation Lands - Multiple Sources)
- Provincially Significant Wetland (PSW)

**Other Land**

- Federal Land
- Landscape Zones (i.e. South-of-Shield Land Between / Canadian Shield)



Produced by: Ontario Ministry of Natural Resources  
 This map is for illustrative purposes only. Do not consider it a precise indicator of routes, locations, nor as a guide to navigation. This map is for working purposes only and not intended for external distribution. This map may also contain errors or omissions.

