

KLT Securement Strategy and Kawarthas Naturally Connected

Ian Attridge – Kawartha Land Trust
KNC Workshop
October 19, 2016



KAWARTHA LAND TRUST

Presentation Objectives

- Outline KLT Securement Strategy and priorities
- Demonstrate role of KNC in securement



KAWARTHA LAND TRUST

KLT Mission

*caring for lands entrusted to us and
helping others protect the land they
love in the Kawarthas*



KAWARTHA LAND TRUST

“Protecting the Land You Love”

Since its formation in 2001, Kawartha Land Trust has secured 11 properties comprising 3,040 acres of important, diverse types of land across the region



KAWARTHA LAND TRUST

What are Land Trusts?

Community-based non-profit charities acquiring interests in land for conservation

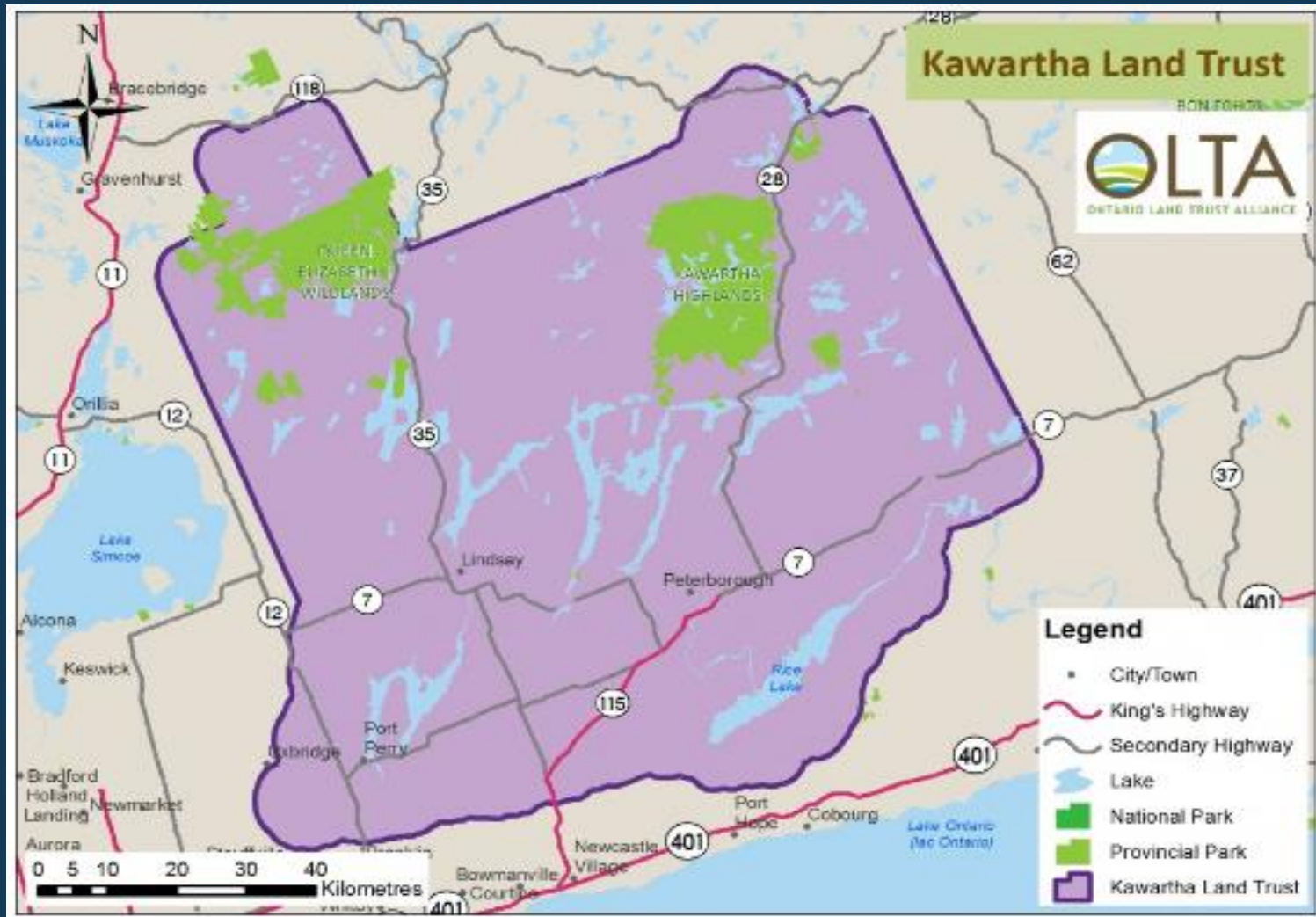
Local, provincial and national – OLTA: over 30 in Ontario

Three conservation approaches:

- Donations of land
- Donations of conservation agreements
- Stewardship of land



Kawartha Land Trust “Service Area”



Looking Forward

From the new KLT Strategic Plan

1. **Protect additional lands for nature**
2. **Ensure sound and sustainable stewardship**
3. **Raise funds to support land securement and stewardship**
4. **Engage the Kawartha community**
5. **Increase organizational strength**



KAWARTHA LAND TRUST

KLT Securement Strategy - Vision

“Our vision is a protected system of significant natural lands that are both valued and cared for by people across the Kawartha region.”



KAWARTHA LAND TRUST

Conservation Goals

- Environment Canada recommends: 30% of landscape in natural cover
- Fed/Prov/CBD Aichi target: 17% of land protected by 2020
- Current Kawartha region statistics:
 - 53% in natural cover
 - 8% of land protected



KLT Securement Directions

Protect additional natural lands:

1. Implement and communicate our securement strategy
2. Work with other conservation partners
3. Enhance securement policy and practices



KAWARTHA LAND TRUST

Securement Priorities: An Evolving Methodology

1. Landscape Analysis

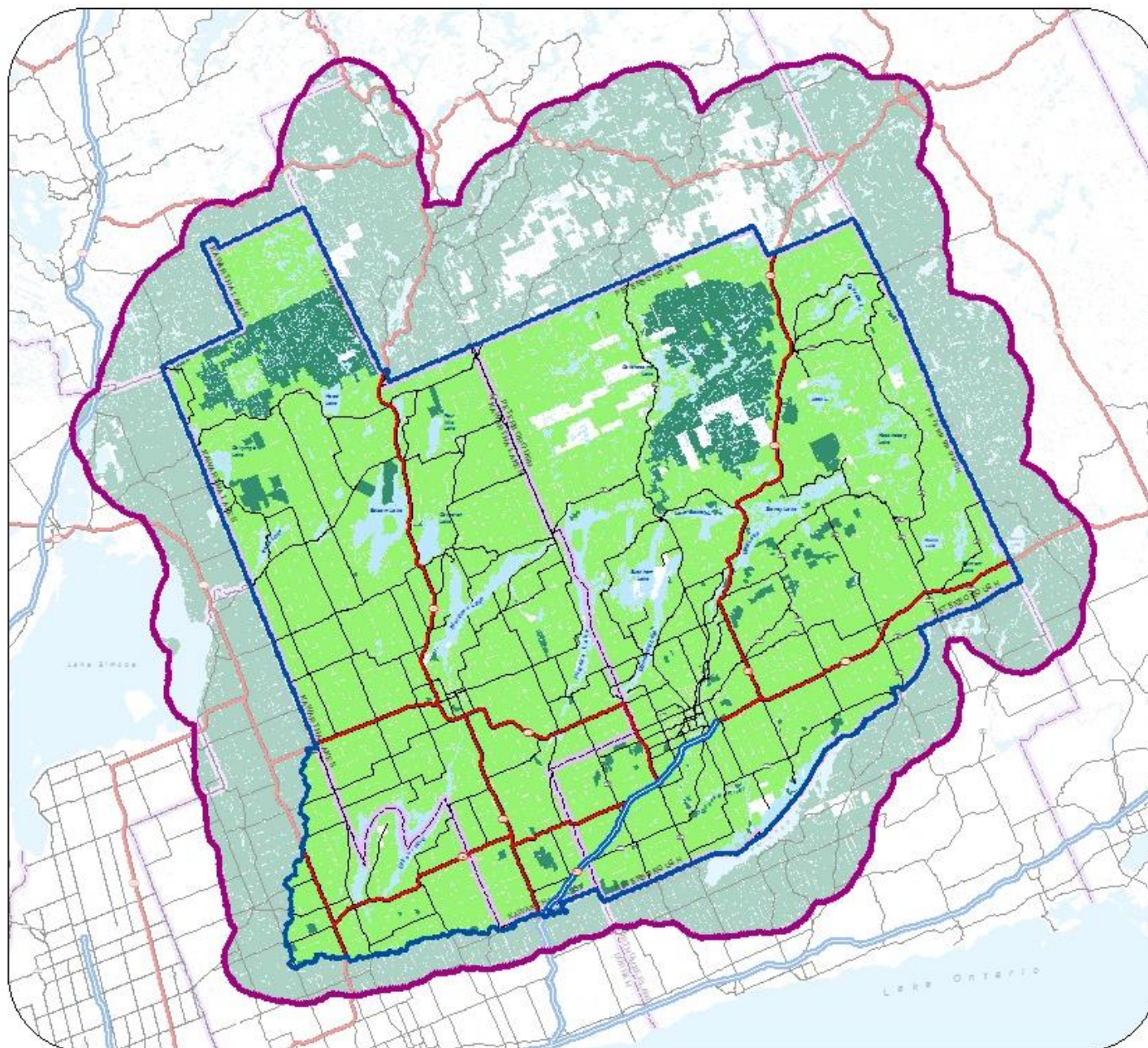
- A. First Filtering - general
- B. Second Filtering - significant features

2. Property Analysis

- A. Property Ranking
- B. Property Assessment



KLT Funnel Approach - Filter 3: Protected Areas



- KNC Analysis Area
- KLT Area
- Unprotected Areas
- Filter - Protected Areas
- Waterbodies
- Administrative Boundaries
- Road Class**
- Divided Highway
- Highway
- Arterial Road

of Properties:

KLT Area = 121606 (1740513 acres)

Unprotected Areas = 121212 (1570748 acres)



0 10 20 40 Km

© Kawartha Land Trust, 2016.
1545 Monaghan Rd., P.O. Box 2338
Peterborough ON K9J 7Y8
705.743.5599, info@kawarthalandtrust.org

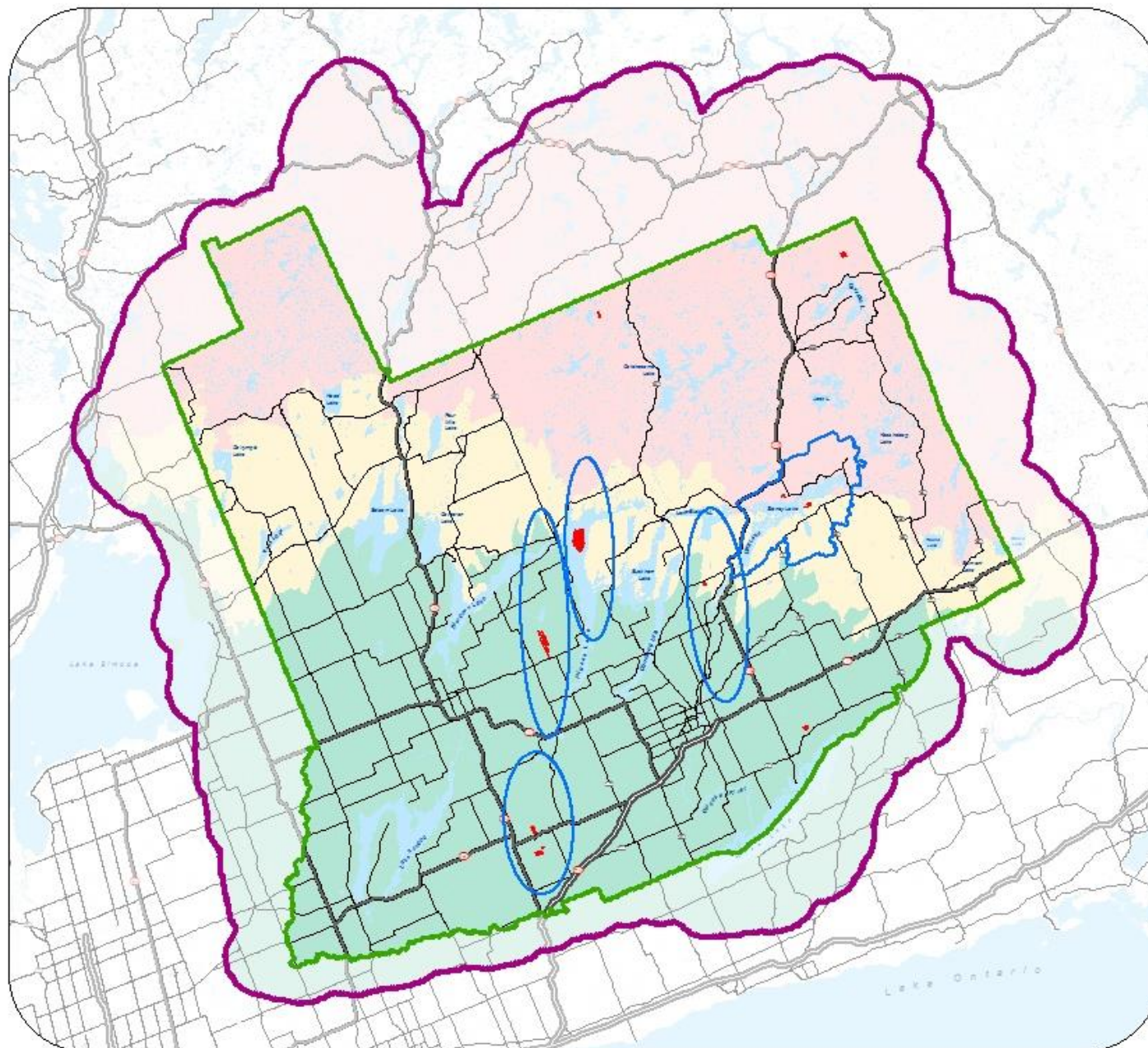
Data supplied under license by the Ontario
Ministry of Natural
Resources and Natural Resources Canada.

This map is illustrative only. Do not rely on it as
being a precise indicator of privately-owned land,
routes, locations of features, nor as a guide to
navigation. This is not a plan of survey.



KAWARTHA LAND TRUST
Protecting the land you love.

KLT Funnel Approach - Focal Areas



- KNC Analysis Area
- KLT Area
- Focal Areas
- KLT Secured Properties
- Canadian Shield
- Land Between
- South-of-Shield
- Waterbodies

Road Class

- Divided Highway
- Highway
- Arterial Road



0 10 20 40 Km

© Kawartha Land Trust, 2016.
1545 Monaghan Rd. PO, Box 2338
Peterborough ON K9J 7Y8
705.743.5599, info@kawarthalandtrust.org

Data supplied under license by the Ontario
Ministry of Natural
Resources and Natural Resources Canada.

This map is illustrative only. Do not rely on it as
being a precise indicator of privately-owned land,
routes, locations of features, nor as a guide to
navigation. This is not a plan of survey.



KAWARTHA LAND TRUST
Protecting the land you love.

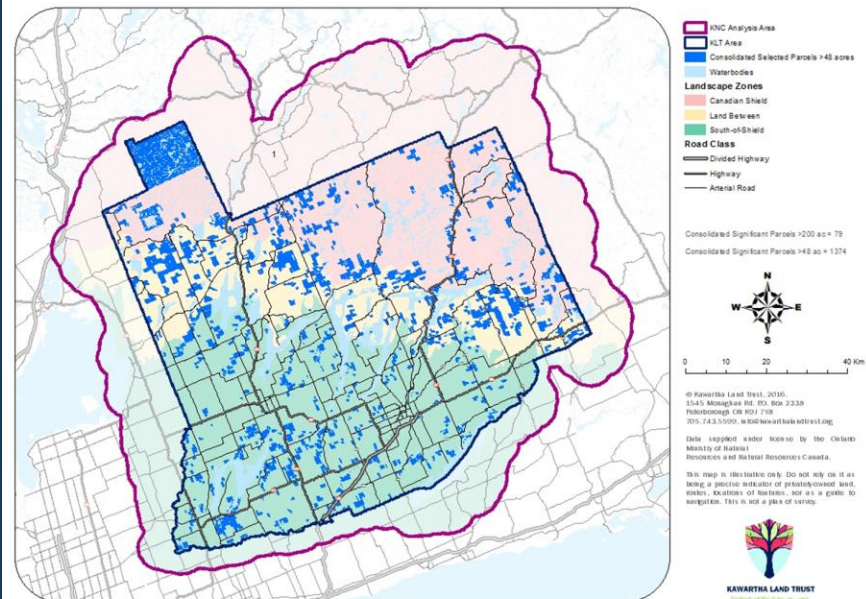
Landscape Analysis Results

	# Properties	Total Acres
KNC Focus Area	121,606	1,740,513
KLT Properties of Interest >48 ac	1,374	271,360



KAWARTHA LAND TRUST

KLT Funnel Approach - 2nd Filter >48 acres



KNC in KLT Priorities - Mapping

- Used geography of the KNC analysis and focus areas
- Applied mapping results from KNC and other projects
 - Preferred Scenario, connectivity, protection, priorities, TLB, MNRF
- Worked with KNC partners to update mapping information



KNC in KLT Priorities - Partnerships

- Identified areas to coordinate with KNC Securement Working Group
- Helped train Trent University and Fleming College students
- Assisted landowners with priority tree planting areas, funding



Conclusions

- KNC has produced important, useful data and mapping
- KNC has built worthwhile partnerships
- KLT has applied KNC to:
 - identify securement priorities
 - assist landowners
 - work with other conservation partners
 - complete successful conservation projects



EXTRA SLIDES/MAPS!



KAWARTHA LAND TRUST

KLT Priority Areas & Features

Long, Natural Shorelines
(Lakes, Rivers)

Prairie Remnants

Alvars and Limestone
Features

Oak Ridges Moraine

Unique Topographical
Features (e.g. drumlins,
eskers, hilltops)

Large Woodlands

Major Corridors (The Land
Between, other landscapes
and linkages)

Important Cultural Sites



KAWARTHA LAND TRUST

Property-Specific Analysis

A. Property Ranking:

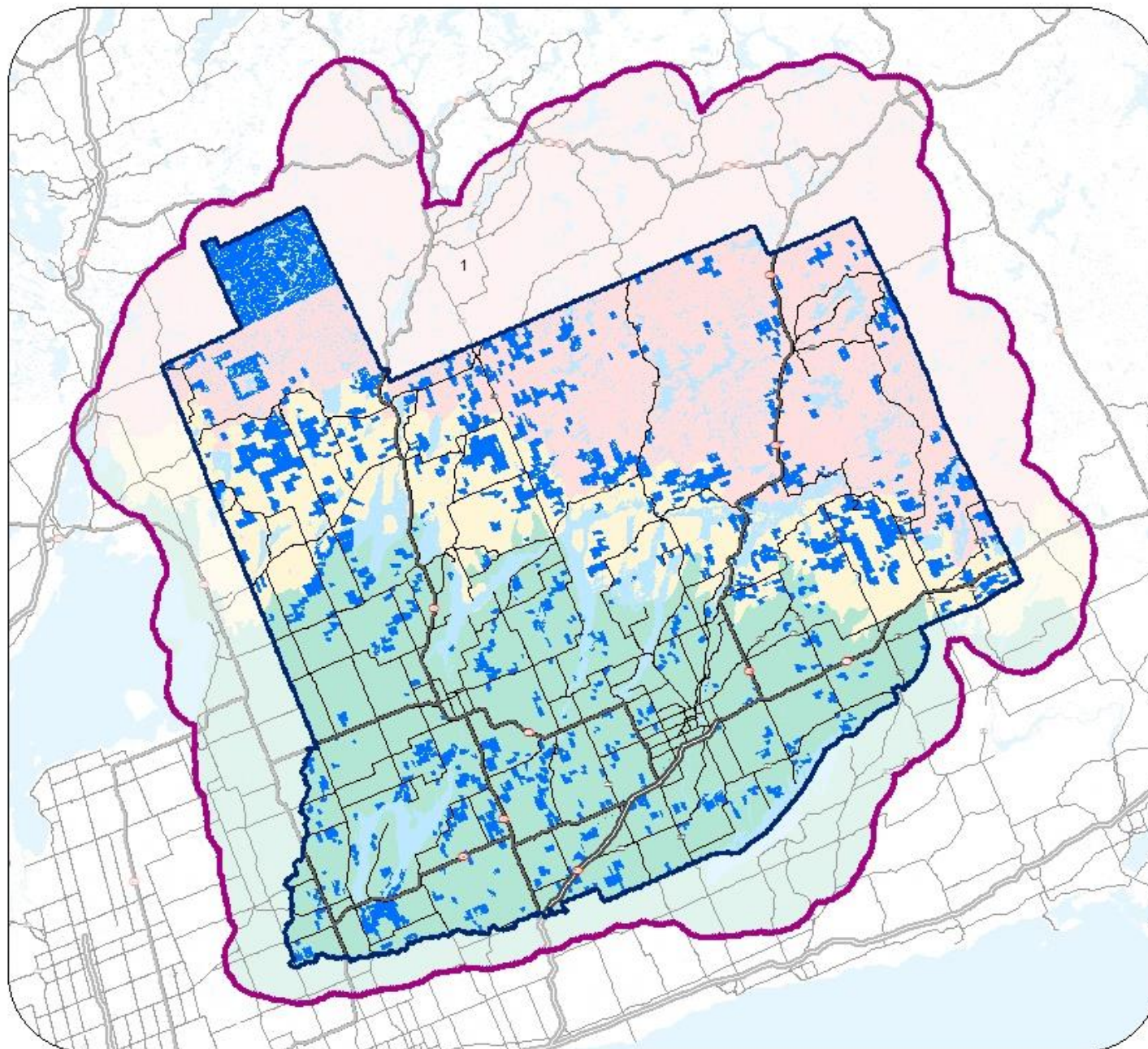
- Property size and portion
- Proximity (1 km) to other features

B. Property Assessment:

- Priority areas
- Criteria



KLT Funnel Approach - 2nd Filter >48 acres



- KNC Analysis Area
- KLT Area
- Consolidated Selected Parcels >48 acres
- Waterbodies
- Landscape Zones**
 - Canadian Shield
 - Land Between
 - South-of-Shield
- Road Class**
 - Divided Highway
 - Highway
 - Arterial Road

Consolidated Significant Parcels >200 ac = 79

Consolidated Significant Parcels >48 ac = 1374



0 10 20 40 Km

© Kawartha Land Trust, 2016.
1545 Monaghan Rd. PO. Box 2338
Peterborough, ON K9J 7Y8
705.743.5599, info@kawarthalandtrust.org

Data supplied under license by the Ontario
Ministry of Natural
Resources and Natural Resources Canada.

This map is illustrative only. Do not rely on it as
being a precise indicator of privately-owned land,
routes, locations of features, nor as a guide to
navigation. This is not a plan of survey.



KAWARTHA LAND TRUST
Protecting the lands you love.