

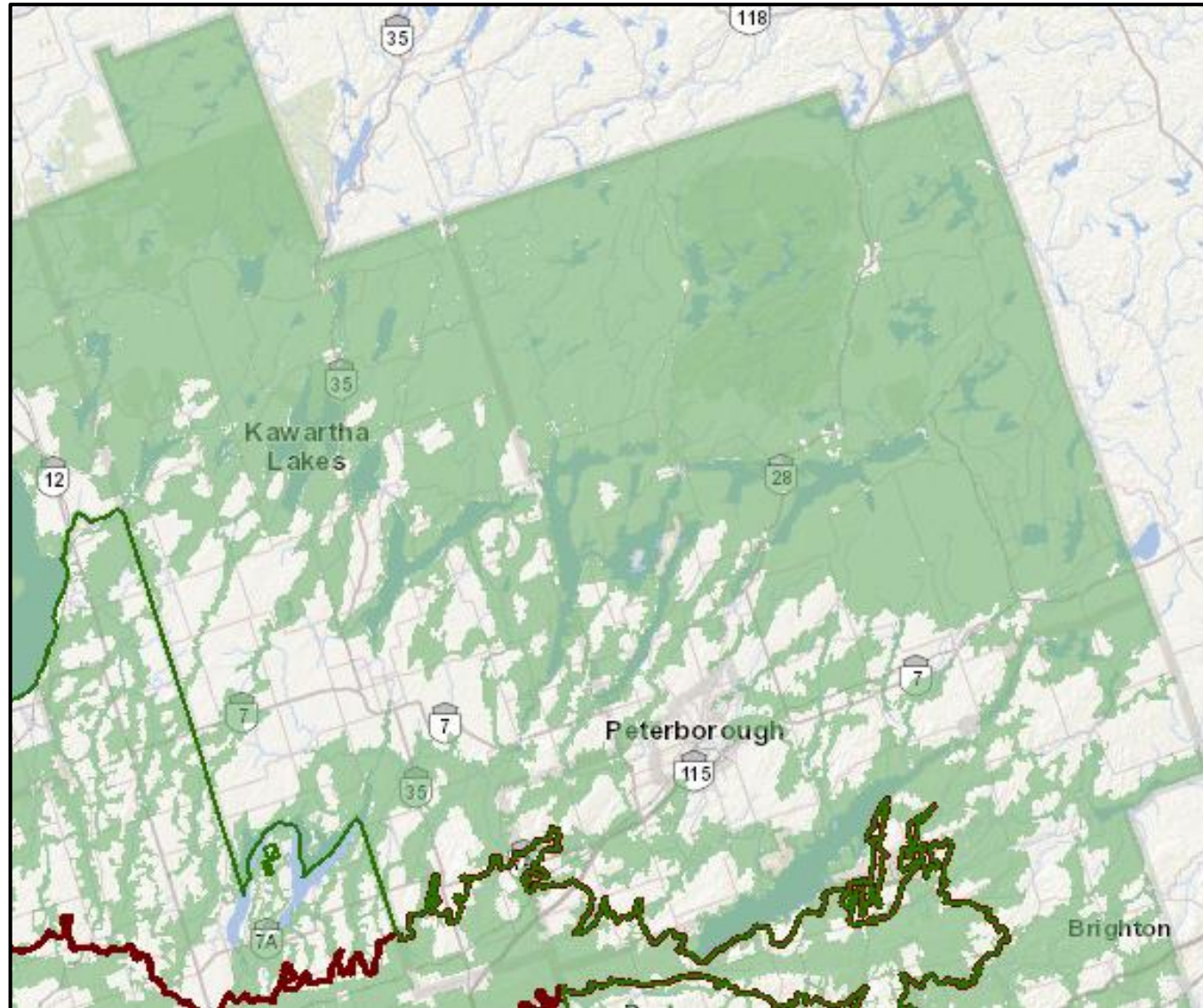


# Natural Heritage Mapping and Policies

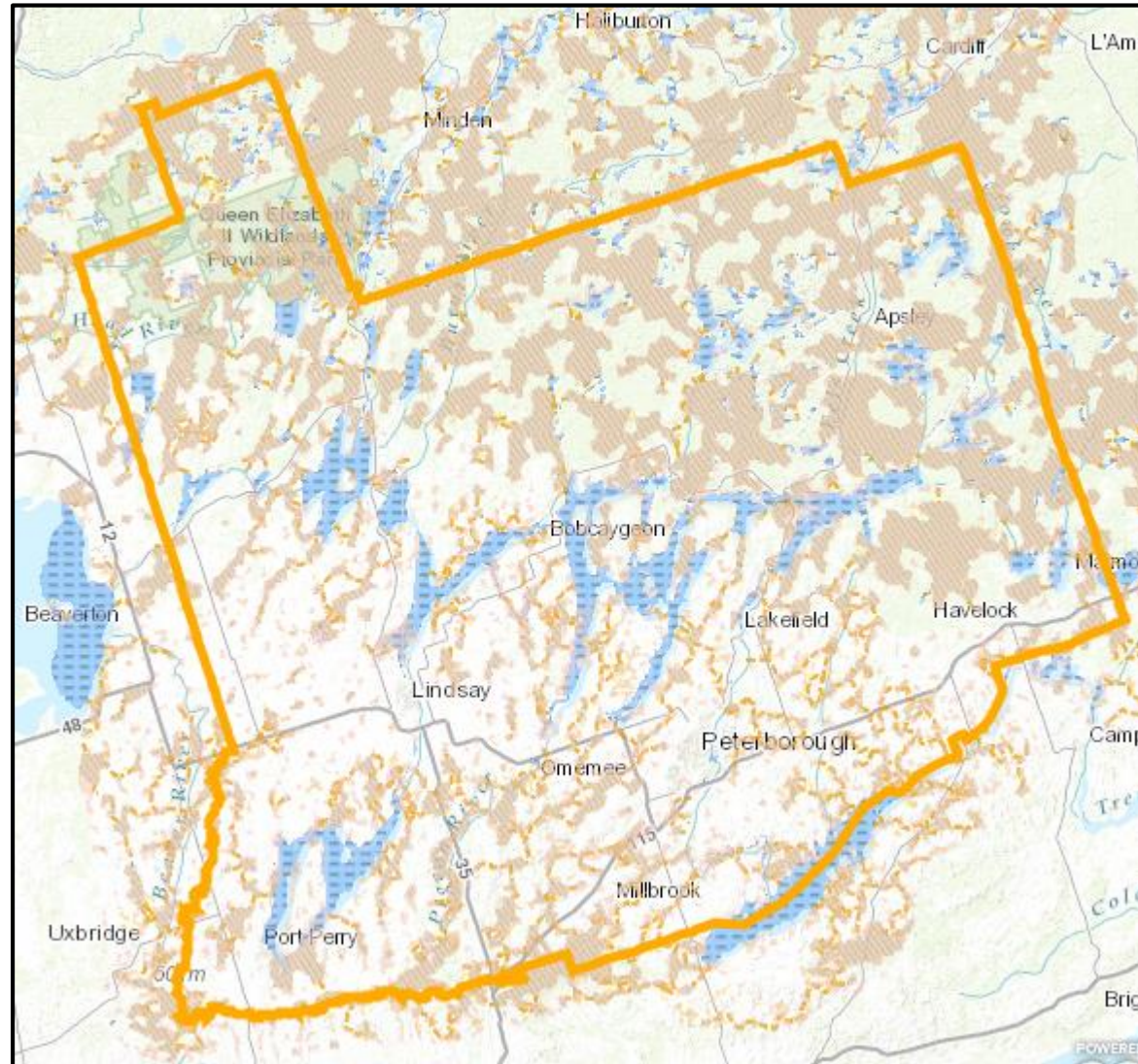
April 25, 2018



# Provincial Natural Heritage Mapping

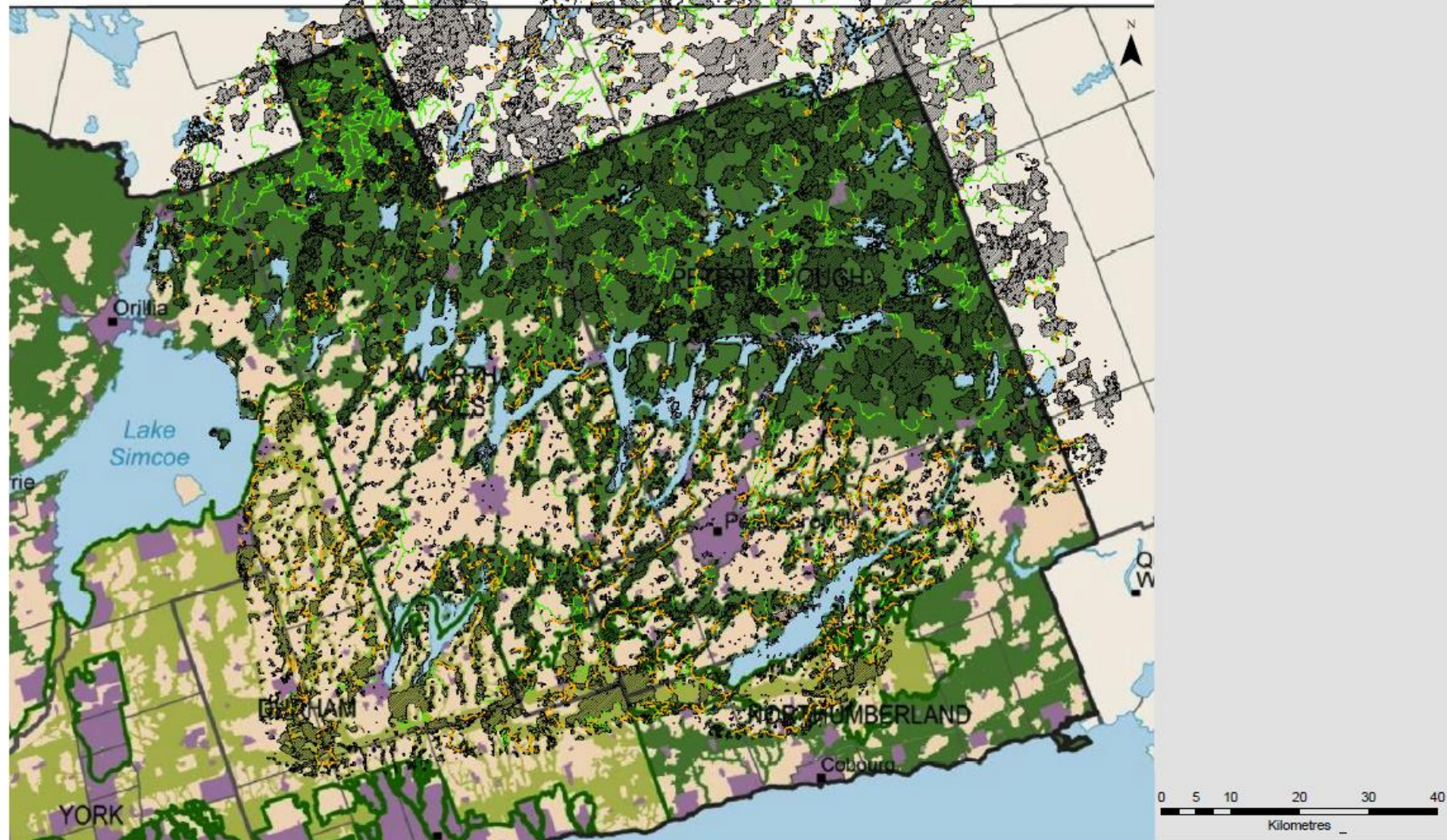


# KNC Mapping – Core Areas & Connectivity





**OVERLAY OF THE  
KAWARTHA NATURALLY CONNECTED  
NATURAL HERITAGE SYSTEM AND THE  
PROPOSED GROWTH PLAN  
NATURAL HERITAGE SYSTEM  
FOR THE GOLDEN HORSESHOE**



# Guiding Principles

Stakeholders support a Natural Heritage System that:

- identifies environmentally significant landscape requiring protection;
- has been developed collaboratively using a scientific approach.
- The principal of “Environment First” is the base for all planning decisions since natural heritage features are irreplaceable.
- Geologic and ecologic diversity throughout the region’s various bio-regions within the NHS will be recognized.
- Consideration of competing interests for the same land area will be guided by direction contained in the PPS.
- Relationships and synergies between the Natural Heritage System and the surrounding environment, including agricultural lands, urban areas and resource extraction areas, will be recognized.

# Goals

- Strong land use policies will be in place that support sustainable development, foster conservation and provide resiliency to climate change through protection of the Natural Heritage System
- Growth and land use will be managed in a manner that maintains, restores, and enhances the biodiversity, connectivity, and ecological functions of the Natural Heritage System.
- A full range of planning functions and tools will be applied recognizing:
  - a relationship between natural and built environments, including agriculture;
  - the principle of preserving resources and protecting the environment.
- Opportunities for natural heritage enjoyment, appreciation, and outdoor recreation will be increased.
- Policies that appropriately recognize geologic and ecologic diversity will be in place.



# Objectives

- Protect terrestrial natural heritage and aquatic systems from incompatible land use and development
- Direct new development and land uses away from the NHS so that negative impacts will be avoided where possible, minimized where avoidance is not feasible, and compensated for as a last resort
- Permit new land uses and development by applying a net-gain or no-net-loss principle that is achieved either through financial compensation or off-site enhancement
- Clearly set out the requirements for terrestrial and aquatic environmental impact assessments
- Give natural features that are within the NHS a greater standard for restoration and enhancement as opposed to similarly categorized features outside the NHS.
- In OP/ZBL, define & identify existing terrestrial and aquatic natural heritage features that are prioritized for restoration and whose protection is essential to the fulfillment of the goals.
- Create, maintain, and update an inventory of all core natural heritage features and corridors, and all linkages to aquatic systems and include them as Official Plan Schedules or overlays.
- Encourage the development and implementation of complementary policies, programs and practices, including site alteration and tree removal by-laws, and site plan control for waterfront and other priority natural system heritage areas.
- Draft policy for OP's that requires implementation of NHS planning using Zoning provisions

# PPS

- 2.1.2 The diversity and connectivity of natural features in an area, and the long-term *ecological function* and biodiversity of *natural heritage systems*, should be maintained, restored or, where possible, improved, recognizing linkages between and among *natural heritage features and areas*, *surface water features* and *ground water features*.
- 2.1.4 & 2.1.5 Development and site alteration not permitted in significant features or adjacent lands: wetlands, woodlands, ANSI, certain habitat unless EIS demonstrates no impact
- Consideration for protection of aquatic features



# Conclusion

- KNC mapping and policies based on more scientific approach
- Goals and objectives (and mapping) are more succinct
- Provincial mapping serving as an initial screen for EIS consideration
- Hoping to use KNC mapping as a tool for County OP
- Provincial NHS mapping prevails